

Offering care and concern for people in work

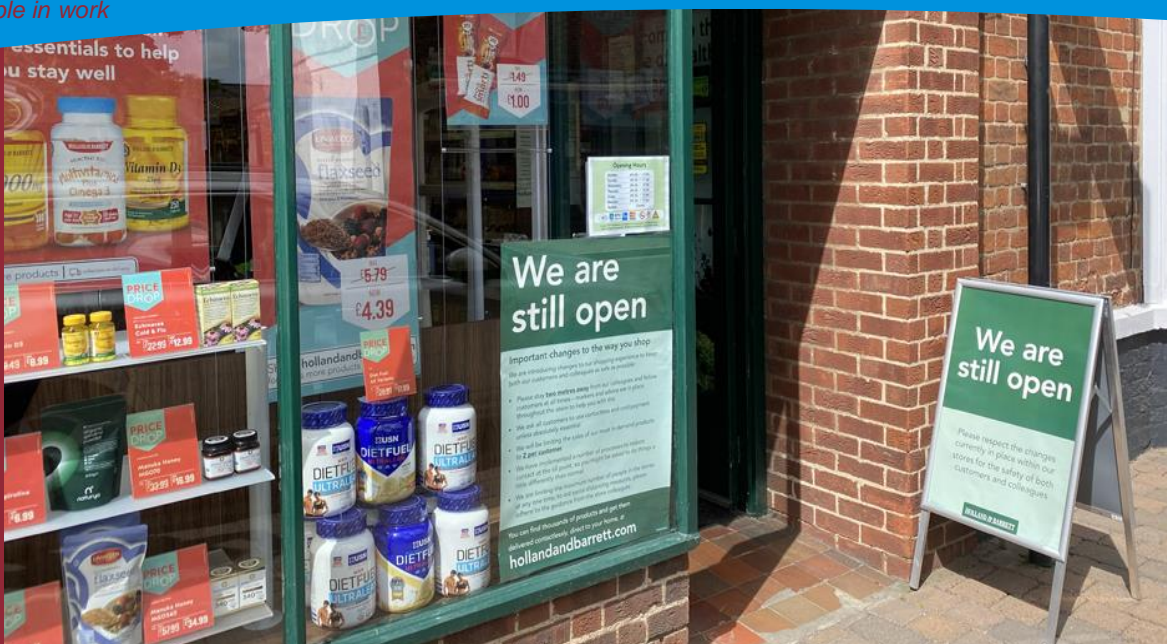
COMING SOON...

Online training as chaplaincy resumes

- staying safe as a chaplain
- undertaking COVID-19 risk assessments

FWW Development Plan Phase II

More details will be given in the next Newsletter as trustees give final approval to the plan for the next 3 years.



A call for new volunteer lay chaplains

During these unusual times churches have found new and encouraging ways of reaching out and serving their local communities. They have shown that being a “church” does not depend on being within a church building.

As the lockdown eases there is great opportunity and need for chaplaincy to those at work. FWW is keen to support and work with congregations seeking to build links with their local economy and workplaces.

We also need new volunteers to continue current chaplaincy, strengthening our local teams in Stourport, Kidderminster, Worcester, Redditch, Alvechurch and Pershore.

Please call Rev'd Dick Johnson for more information on 07946 655 450.

Getting back to support our workplaces once again

As the COVID-19 lockdown continues there is great concern for those whom the Faith at Work in Worcestershire (FWW) chaplains would normally be visiting. Whilst we continue to offer our prayers for them, their families and businesses, we look forward to the time when we might be able to visit and offer our support in person once again.

The FWW local team leaders have been discussing how this might be achieved and what measures need to be put in place. We will need to ensure that we continue to follow the latest Government guidelines, whilst prioritizing the safety of chaplains and those we visit. Further details of the measures which will need to be taken can be found at <https://www.faithatwork.org.uk/.../Resuming-Chaplaincy-Plan-2020-Version-1.0.pdf>

Workplace visits can NOT take place until these measures have been put in place, and we will be talking with chaplains and preparing so that, where and when visiting can resume, it can as soon as possible.

In the meantime...

The Pershore team has pioneered an exciting initiative for their businesses which has been very well received by those they support.

Following up on “Operation Keeping in Touch”, which was undertaken during March, team members have been proactively making contact with their workplaces by telephone or email, to ask how businesses are coping and to let them know that, as chaplains, they are continuing to offer care and support wherever it is needed. Some contact details were gathered in March, others have been obtained from company websites. The responses from the workplaces indicate that this contact is much appreciated and has shown that it is an opportunity to further build relationships.

This model may be more difficult to replicate for larger national chain outlets, and for many others, where it has been impossible to get hold of any contact details. We all have a new appreciation of the true value of face to face communication and long for being able to visit once again.

When all that we have come to rely on, including ourselves, proves fragile; where do we turn for reassurance?
Read the Reflection, In Good Times and Bad by Rev'd Paul Lawlor, Redditch Town Centre Chaplaincy Team.
<https://www.faithatwork.org.uk/in-good-times-and-bad/>



CONTACT US

www.faithatwork.org.uk
enquiries@faithatwork.org.uk
07946 655 450
Facebook & Twitter @faithatworkworc

14b Top Barn Business Centre,
Worcester Road, Holt Heath,
Worcester,
WR6 6NN

Registered charity no. 1176881